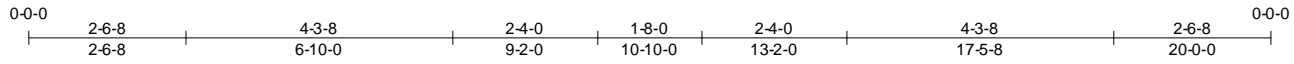
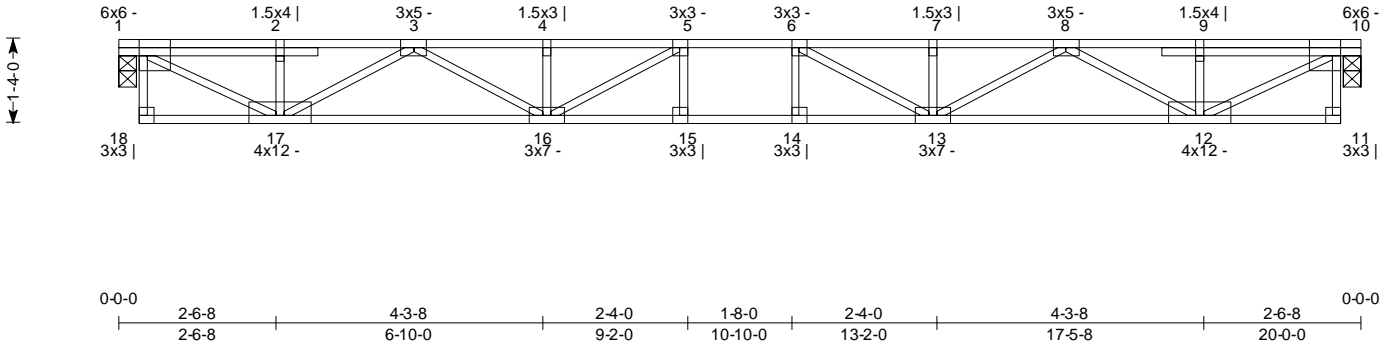
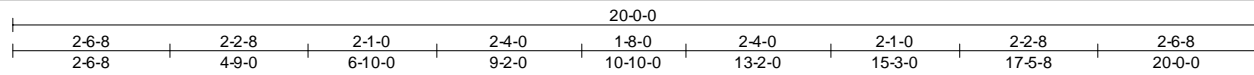


SPAN 20-0-0	PITCH 0/12	QTY 1	OHL 0-0-0	OHR 0-0-0	PLYS 1	SPACING 16 in	WGT/PLY 83 lbs	BRD FT/PLY 56.0
----------------	---------------	----------	--------------	--------------	-----------	------------------	-------------------	--------------------



Loading	General	CSI Summary	Deflection	L/	(loc)	Allowed
Load (psf): 40	Bldg Code: IRC 2006/TPI 1-2002	TC: 0.42 (5-6)	Vert TL: 0.32 in	L / 726	(14-15)	L / 360
TCDL: 10	Rep Mbr Increase: No	BC: 0.84 (14-15)	Vert LL: 0.23 in	L / 999	(14-15)	L / 480
BCLL: 0	D.O.L.: 100 %	Web: 0.39 (10-12)	Horz TL: 0.05 in		10	
BCDL: 5	Matrix					
Plate Offsets (Jnt:X,Y,Ang): (1:7-0,3-0,0.) (2:0-12,2-0,90.) (3:0-0,1-8,0.) (4:0-12,1-8,90.) (5:1-8,1-8,0.) (6:1-8,1-8,0.) (7:0-12,1-8,90.) (8:0-0,1-8,0.) (9:0-12,2-0,90.) (10:7-0,3-0,0.) (11:5-8,1-8,90.) (12:0-12,2-0,0.) (13:0-12,1-8,0.) (14:1-8,1-8,90.) (15:1-8,1-8,90.) (16:0-12,1-8,0.) (17:0-12,2-0,0.) (18:5-8,1-8,90.)						

**Reaction Summary**

JT	Type	Brg Combo	Brg Width	Rqd Brg Area	Max React	Max Grav Uplift	Max MWFRS Uplift	Max C&C Uplift	Max Uplift	Max Horiz
1	Pin (Wall)	1	3.5 in	-1.#J in^2	733 lbs	.	.	.	.	.
	10H Roll (Wall)	1	3.5 in	-1.#J in^2	733 lbs	.	.	.	.	.

**Material Summary**

TC	SPF #2 4 x 2
BC	SPF #2 4 x 2
Webs	SPF #2 4 x 2

**Member Forces Summary**

Table indicates: Member ID, max CSI/Stress, max axial force, (max compr. force if different from max axial force)

TC	1-2 0.091 -1,225 lbs	4-5 0.391 -2,530 lbs	7-8 0.389 -2,530 lbs
	2-3 0.189 -1,228 lbs	5-6 0.419 -2,787 lbs	8-9 0.189 -1,228 lbs
	3-4 0.389 -2,530 lbs	6-7 0.391 -2,530 lbs	9-10 0.091 -1,225 lbs
BC	11-12 0.058 0 lbs	13-14 0.829 2,787 lbs	15-16 0.829 2,787 lbs
	12-13 0.630 1,972 lbs	14-15 0.839 2,787 lbs	16-17 0.630 1,972 lbs
Webs	1-18 0.002 5 lbs	3-16 0.181 640 lbs	6-14 0.003 10 lbs
	1-17 0.389 1,380 lbs	4-16 0.022 -148 lbs	6-13 0.053 -293 lbs
	2-17 0.028 -189 lbs	5-16 0.053 -293 lbs	7-13 0.022 -148 lbs
	3-17 0.156 -857 lbs	5-15 0.003 10 lbs	8-13 0.181 640 lbs
			8-12 0.156 -857 lbs
			9-12 0.028 -189 lbs
			10-12 0.389 1,380 lbs
			10-11 0.002 5 lbs

**Notes:**

- 1) When this truss has been chosen for quality assurance inspection, the Plate Placement Method per TPI 1-2002/A3.2 shall be used.
- 2) Building designer shall verify BC DL, including BC self weight, is less than or equal to 5 psf.