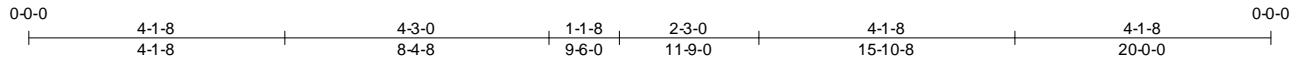
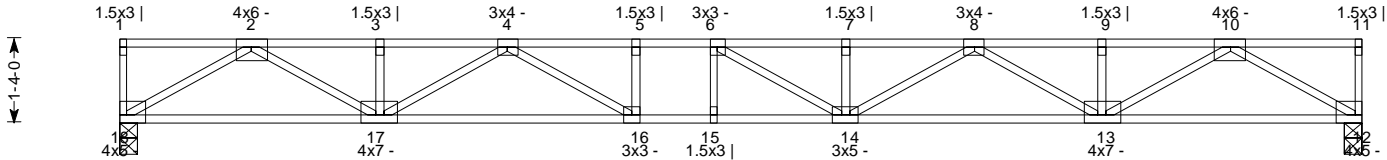
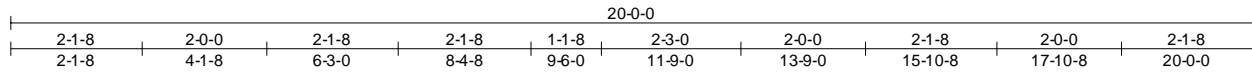


SPAN 20-0-0	PITCH 0/12	QTY 1	OHL 0-0-0	OHR 0-0-0	PLYS 1	SPACING 16 in	WGT/PLY 77 lbs	BRD FT/PLY 54.0
----------------	---------------	----------	--------------	--------------	-----------	------------------	-------------------	--------------------



Loading	General	CSI Summary	Deflection	L/	(loc)	Allowed
Load (psf): 40	Bldg Code: IRC 2006/TPI 1-2002	TC: 0.45 (4-5)	Vert TL: 0.35 in	L/665	(14-15)	L/360
TCDL: 10	Rep Mbr Increase: No	BC: 0.50 (15-16)	Vert LL: 0.26 in	L/912	(14-15)	L/480
BCLL: 0	D.O.L.: 100%	Web: 0.28 (10-13)	Horz TL: 0.05 in		12	
BCDL: 5	Matrix					
Plate Offsets (Jnt:X,Y,Ang): (1:0-12,1-8,90), (2:0-0,2-0,0), (3:0-12,1-8,90), (4:0-0,1-8,0), (5:0-12,1-8,90), (6:1-8,1-8,0), (7:0-12,1-8,90), (8:0-0,1-8,0), (9:0-12,1-8,90), (10:0-0,2-0,0), (11:0-12,1-8,90), (12:2-8,2-0,0), (13:0-12,2-0,0), (14:0-12,1-8,0), (15:0-12,1-8,90), (16:1-8,1-8,0), (17:0-12,2-0,0), (18:2-8,2-0,0)						

Reaction Summary

JT	Type	Brg Combo	Brg Width	Rqd Brg Area	Max React	Max Grav Uplift	Max MWFRS Uplift	Max C&C Uplift	Max Uplift	Max Horiz
18	Pin (Wall)	1	3.5 in	1.40 in^2	733 lbs
12H	Roll (Wall)	1	3.5 in	1.40 in^2	733 lbs

Material Summary

TC	SPF #2 4 x 2
BC	SPF 2100/1.8 4 x 2
Webs	SPF #2 4 x 2

Member Forces Summary

Table indicates: Member ID, max CSI/Stress, max axial force, (max compr. force if different from max axial force)

Member	Force	Stress	Force	Stress	Force	Stress	Force	Stress
TC	1-2 0.174 0 lbs	4-5 0.451 -2,952 lbs	7-8 0.448 -2,932 lbs	10-11 0.176 0 lbs				
	2-3 0.304 -1,987 lbs	5-6 0.434 -2,952 lbs	8-9 0.304 -1,990 lbs					
	3-4 0.304 -1,987 lbs	6-7 0.450 -2,932 lbs	9-10 0.304 -1,990 lbs					
BC	12-13 0.182 1,128 lbs	14-15 0.496 2,952 lbs	16-17 0.383 2,580 lbs					
	13-14 0.352 2,577 lbs	15-16 0.496 2,952 lbs	17-18 0.189 1,126 lbs					
Webs	1-18 0.009 -60 lbs	4-17 0.122 -687 lbs	6-14 0.004 -23 lbs	9-13 0.020 -131 lbs				
	2-18 0.232 -1,306 lbs	4-16 0.122 432 lbs	7-14 0.024 -159 lbs	10-13 0.282 999 lbs				
	2-17 0.281 998 lbs	5-16 0.023 -154 lbs	8-14 0.116 412 lbs	10-12 0.233 -1,307 lbs				
	3-17 0.020 -133 lbs	6-15 0.007 -49 lbs	8-13 0.121 -680 lbs	11-12 0.009 -60 lbs				

Notes:

- When this truss has been chosen for quality assurance inspection, the Plate Placement Method per TPI 1-2002/A3.2 shall be used.
- Building designer shall verify BC DL, including BC self weight, is less than or equal to 5 psf.