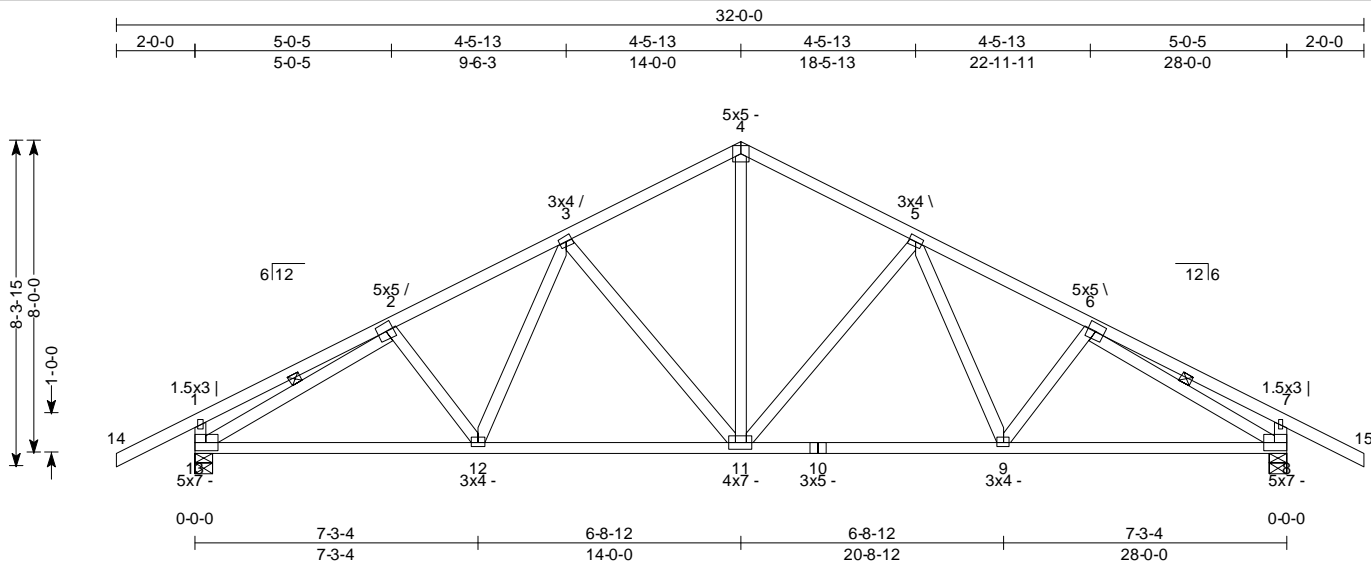


SPAN 28-0-0	PITCH 6/12	QTY 20	OHL 2-0-0	OHR 2-0-0	CANT L 0-0-0	CANT R 0-0-0	PLYS 1	SPACING 24 in	WGT/PLY 127 lbs	BRD FT/PLY 82.7
----------------	---------------	-----------	--------------	--------------	-----------------	-----------------	-----------	------------------	--------------------	--------------------



Loading	General	CSI Summary	Deflection	L/	(loc)	Allowed
TCLL: 20 psf	Bldg Code: IRC 2006/	TC: 0.81 (14-1)	Vert TL: 0.18 in	L / 999	(9-10)	L / 240
Snow: 42 psf	TPI 1-2002	BC: 0.57 (8-9)	Vert LL: 0.04 in	L / 999	(11-12)	L / 360
TCDL: 10 psf(rake)	Rep Mbr Increase: Yes	Web: 0.88 (3-11)	Horz TL: 0.07 in		8	
BCLL: 0 psf	D.O.L.: 100 %					
BCDL: 10 psf	Simplified					
Plate Offsets (Jnt:X,Y,Ang): (1:1-12,3-1,90.) (2:1-10,4-11,27.) (3:0-0,3-15,27.) (4:0-0,3-15,0.) (5:0-0,3-15,27.) (6:1-10,4-11,27.) (7:1-12,3-1,90.) (8:3-8,3-8,0.) (9:0-0,3-8,0.) (10:0-0,1-12,0.) (11:0-0,3-8,0.) (12:0-0,3-8,0.) (13:3-8,3-8,0.)						

Reaction Summary

JT	Type	Brg Combo	Brg Width	Max React	Max Grav Uplift	Max MWFRS Uplift	Max C&C Uplift	Max Uplift	Max Horiz
13	Pin (Wall)	1	5.5 in	2,126 lbs	.	.	-231 lbs	-231 lbs	41 lbs
8	H Roll (Wall)	1	5.5 in	2,126 lbs	.	.	-231 lbs	-231 lbs	.

Material Summary

TC	SPF 2100/1.8 2 x 4
BC	SPF 2100/1.8 2 x 4
Webs	SPF #2 2 x 4

Bracing Summary

TC Bracing:	Sheathed or purlins at 3-11-0, Purlin design by Others.
BC Bracing:	Sheathed or purlins at 10-0-0, Purlin design by Others.

Loads Summary

- This truss has been designed for the effects of wind loads in accordance with ASCE7 - 05 with the following user defined input: 90 mph, Exposure C, Enclosed, Gable/Hip, Building Category II (I = 1.00), Overall Bldg Dims 25 ft x 60 ft, h = 15 ft, Not End Zone Truss, Neither end web considered. DOL = 1.33
- This truss has been designed for the effects of balanced (6/12, 42 psf) and unbalanced (6/12, 12.6 psf wind, 42 psf lee, 32.9 psf lee over peak to 8.1 ft) snow loads for hips/gables in accordance with ASCE7 - 05 with the following user defined input: 60 psf ground snow load, Terrain Category C, Partially Exposed, Building Category II (I = 1.0), Ct = 1.00, DOL = 1.15. If the roof configuration differs from hip/gable, Building Designer shall verify snow loads.
- This truss has been designed to account for the effects of ice dams forming at the eaves.
- This truss has been designed for the effects of a 16 psf live load computed in accordance with IRC 2006 assuming slope = 6/12 and area supported = 64 ft².
- Minimum storage attic loading has been applied in accordance with IRC 301.5

Member Forces Summary

Table indicates: Member ID, max CSI/Stress, max axial force, (max compr. force if different from max axial force)

TC	14-1	0.808	172 lbs	2-3	0.516	-2,692 lbs	4-5	0.463	-1,927 lbs	6-7	0.299	159 lbs	(-125 lbs)
	1-2	0.299	159 lbs	3-4	0.463	-1,927 lbs	5-6	0.516	-2,692 lbs	7-15	0.808	172 lbs	
BC	8-9	0.570	2,374 lbs	9-11	0.561	2,188 lbs	11-12	0.561	2,188 lbs	12-13	0.570	2,374 lbs	(-8 lbs)
Webs	1-13	0.087	-543 lbs	3-12	0.089	284 lbs	5-11	0.882	-1,015 lbs	6-8	0.539	-2,842 lbs	
	2-13	0.539	-2,842 lbs	3-11	0.882	-1,015 lbs	5-9	0.089	284 lbs	7-8	0.087	-543 lbs	
	2-12	0.040	-138 lbs	4-11	0.286	1,165 lbs	6-9	0.040	-138 lbs				

Notes:

- When this truss has been chosen for quality assurance inspection, the Plate Placement Method per TPI 1-2002/A3.2 shall be used.
- Brace bottom chord with properly applied gypsum board or approved equal, unless noted otherwise.
- Indicates lateral bracing required perpendicular to the plane of the truss at either the midpoint (one shown) or third points (two shown), bracing by others. See BCSI-B3 for addition information.